



# SafetyNet Plus Getting Started Manual



Document Revision CSSN 01/06  
SafetyNet Plus Version 1.00

## Copyright and Trademark

© 2004, Computer Support Systems

All rights reserved. No part of the contents of this manual may be transmitted or reproduced in any form or by any means without the written permission of Computer Support Systems. Computer Support Systems reserves the right to make changes and improvements to its products without providing notice.

Ethernet is a trademark of XEROX Corporation. Java™ is a trademark or a registered trademark of Sun Microsystems, Inc. in the United States and other countries.



### Computer Support Systems Pty Ltd.

Head Office: 373 Johnston Street  
Abbotsford  
VICTORIA 3067  
Australia

Telephone:- 61 3 9419 3955  
Facsimile: - 61 3 9419 3509  
Web Address: - [www.csspl.com.au](http://www.csspl.com.au)  
[sales@csspl.com.au](mailto:sales@csspl.com.au)  
[support@csspl.com.au](mailto:support@csspl.com.au)

## Table of Contents

<b>COPYRIGHT AND TRADEMARK .....</b>	<b>I</b>
<b>1 INTRODUCTION AND OVERVIEW .....</b>	<b>1</b>
1.1 AVAILABLE SAFETYNET PLUS MODELS .....	1
1.2 NETWORK OVERVIEW OF SAFETYNET PLUS .....	2
1.3 HOW TO USE THIS MANUAL .....	2
1.4 ADDITIONAL PRODUCT INFORMATION .....	2
<b>2 REQUIREMENTS .....</b>	<b>3</b>
<b>3 HARDWARE SETUP .....</b>	<b>4</b>
3.1 CONTENTS .....	4
3.2 SAFETYNET PLUS .....	4
3.3 POWER AND ETHERNET CONNECTIONS .....	4
3.4 INSTALLING SENSORS .....	5
3.5 INSTALLING RELAYS.....	5
3.6 INSTALLING THE STROBE OR THE BUZZER .....	5
3.7 INSTALLING PSTN LINE FOR THE MODEM.....	5
3.8 OVERALL CONNECTIONS DIAGRAM (SAMPLE) .....	6
<b>4 SOFTWARE INSTALLATION &amp; OVERVIEW.....</b>	<b>7</b>
4.1 WHERE DO I GO FROM HERE? .....	7

# 1 Introduction and Overview

SafetyNet Plus is a modern network based Environmental Monitoring System (EMS). This product is ideal to monitor facility services and notify of potential environmental problems, which may impact on the network operations.



## Features

- Powerful embedded microprocessor driven, with networking features.
- Up to 2.5 hours of internal battery backed operation.
- 19" inch rack mountable and compact size.
- SNMP features to notify error conditions or to poll data.
- SMS messaging via the Internet, or the option of selecting a network independent internal modem to send SMS messages. \*
- Remote configuration and monitoring capabilities via a web browser.
- User friendly and attractive user interface.
- Two dual-analogue inputs (temperature and humidity) and six user-configurable contact sensor inputs.
- Two individual relays, capable of being driven via a web interface or by sensors.
- Selectable power sources at ordering. I.e. 240 AC or 48V DC
- Remote IP monitoring feature with physical rebooting of servers/systems when failed or stalled. \*\*
- A strobe, a buzzer and LED to indicate error conditions.
- Graphical plotting for analogue sensors.
- Up to 40 entries of alarm and event logs.

\* Optional & recommended. Applicable to models ZSN4003MB & ZSN4003MDB.

\*\* With the option of using a SafetyBoot device.

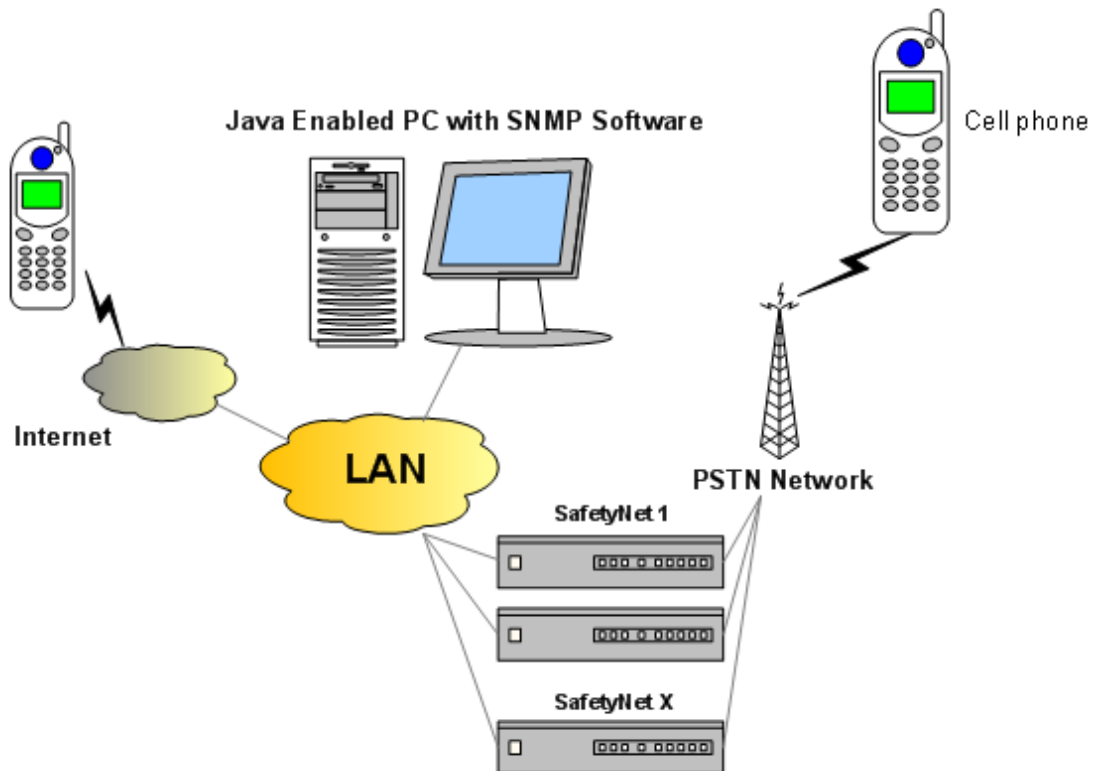
## Applications

- Computer server room monitoring.
- Computer rack monitoring and management.
- Alarm consolidation from other non-net enabled systems.
- Monitoring of other controlled environments
- Monitoring of servers or PC's and rebooting when stalled. \*\* (See above)
- Water monitoring systems.
- Remote door controlling applications.

### 1.1 Available SafetyNet Plus Models

Model Number	Description
ZSN4003	SafetyNet Plus, 240 Volt A/C input, battery backup
ZSN4003D	SafetyNet Plus, 48 Volt D.C, battery backup
ZSN4003M	SafetyNet Plus, 240 Volt A/C input, PSTN modem, battery backup
ZSN4003MD	SafetyNet Plus, 48 Volt D.C, PSTN modem, battery backup

## 1.2 Network Overview of SafetyNet Plus



## 1.3 How to Use This Manual

This **Getting Started** manual is intended to enable the user to quickly and easily install and operate SafetyNet Plus. This manual does not contain detailed information on product functionality hardware capabilities, or its features.

## 1.4 Additional Product Information

Detailed information about SafetyNet Plus can be found in the **SafetyNet Plus User Manual**, provided on the accompanying CD-ROM in PDF format.

## 2 Requirements

The minimum requirements to run SafetyNet Plus effectively are:

- Access to the local network
- Java enabled web browser. (IE 5.5 or higher recommended)
- UDP port 30705 available for communication with SafetyNet Plus on the network.
- Java™ 2 Runtime Environment, Standard Edition, Version 1.4.2 or higher installed on viewing PC.  
(You may install this from <http://java.sun.com/j2se/1.4.2/download.html>)
- To send SMS messages SafetyNet Plus needs access to the Internet. If the modem option is selected to send SMS messages, a password is required supplied by a telecommunications company. Eg: Telstra in Australia provides a product named as "SMS Access Manager". More information can be found in the user manual.

**Note:** Read *install\_notes.txt* & *Java Runtime Environment Notes.txt* for details on minimum system requirements to install Java™ Runtime Environment Version 1.4.2 on your PC.

### 3 Hardware Setup

This chapter describes SafetyNet Plus hardware setup in more detail, and explains how to set up and use the accompanying sensors and relays and the telephone cable to the modem\*.

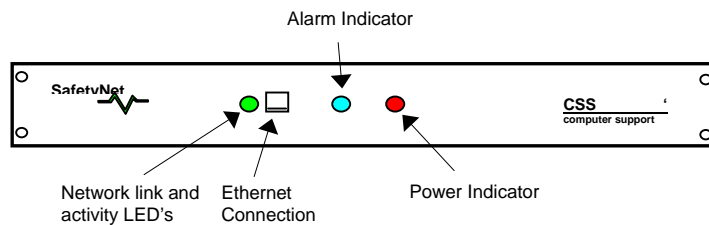
\*Modem is optional. Applicable to models ZSN4003M & ZSN4003MD.

#### 3.1 Contents

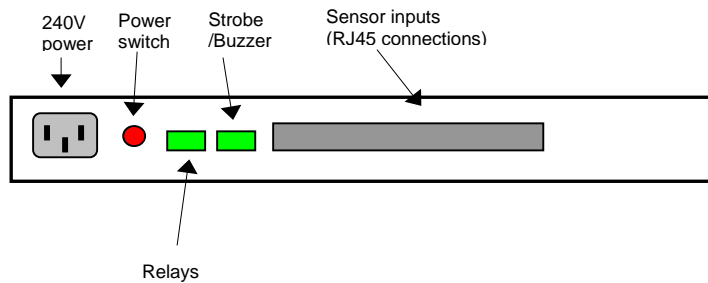
- o 1RU SafetyNet Plus unit with screws.
- o One IEC 240V power cable for models ZSN4003M and ZSN4003
- o One DC 12V A/C power adapter for models ZSN4003D and ZSN4003MD
- o Additional sensors as requested
- o SafetyNet Plus CD-ROM

#### 3.2 SafetyNet Plus

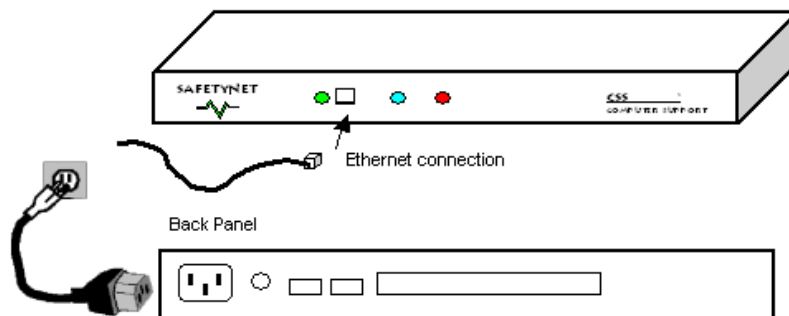
##### Front Panel



##### Rear Panel

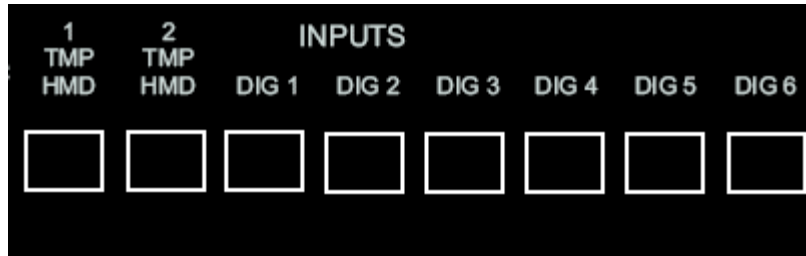


#### 3.3 Power and Ethernet Connections



### 3.4 Installing Sensors

The sensors are installed on the back panel of SafetyNet Plus and connected using RJ45 connections.



Connect the correct sensors to the corresponding input on the back panel as shown above.

The types of sensors accepted on SafetyNet Plus are

- 2 x dual analogue sensors (TMP & HMD x 2)
- 6 x contact sensors (DIG1...DIG6) (smoke, fluid or digital contact sensors)

These sensors are to be connected using standard CAT 5 RJ 45 connection cables.

### 3.5 Installing Relays

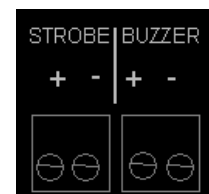
The relay connection is on the back panel of SafetyNet Plus. It is capable of supplying 12V to an external device.

There are two independent relays in total.



### 3.6 Installing the Strobe or the Buzzer

The strobe and the buzzer connection are on the back panel of SafetyNet Plus. Only strobes and buzzers supplied by Computer Support Systems will operate on these terminals. These are driven at 12V D.C.

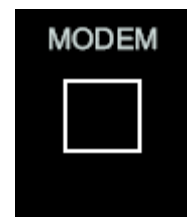


### 3.7 Installing PSTN line for the modem

This is applicable only to the model with the modem (ZSN4003M & ZSN4003MD). The PSTN is connected to the RJ11 connector, which has a label 'Modem'.

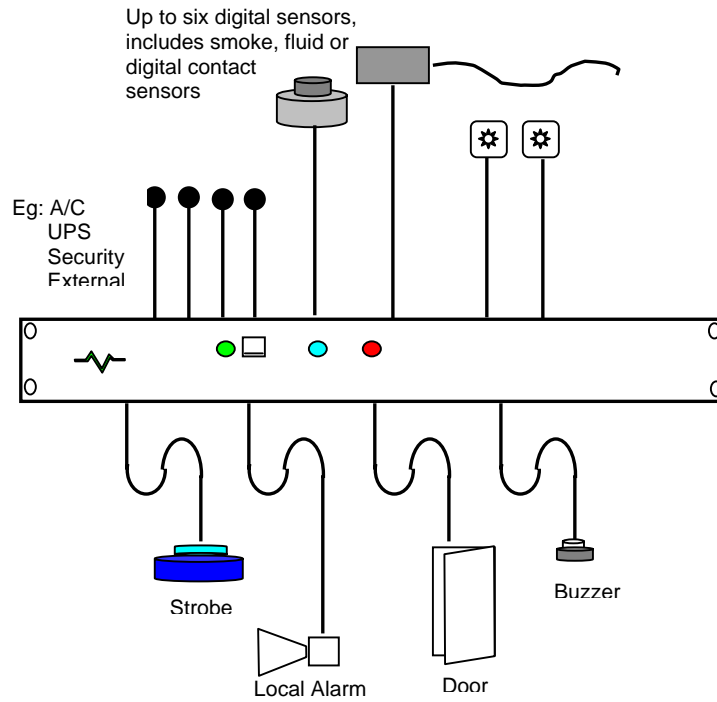
The telephone line could be a direct line or an analogue PABX line. When configuring the modem, the software interface allows specifying the type of line connected.

Connecting a 'digital' PABX line may damage the modem, and may cause the dial tones to be not recognised. Ensure that the line is an analogue type, if connected to a PABX system.





### 3.8 Overall Connections Diagram (Sample)

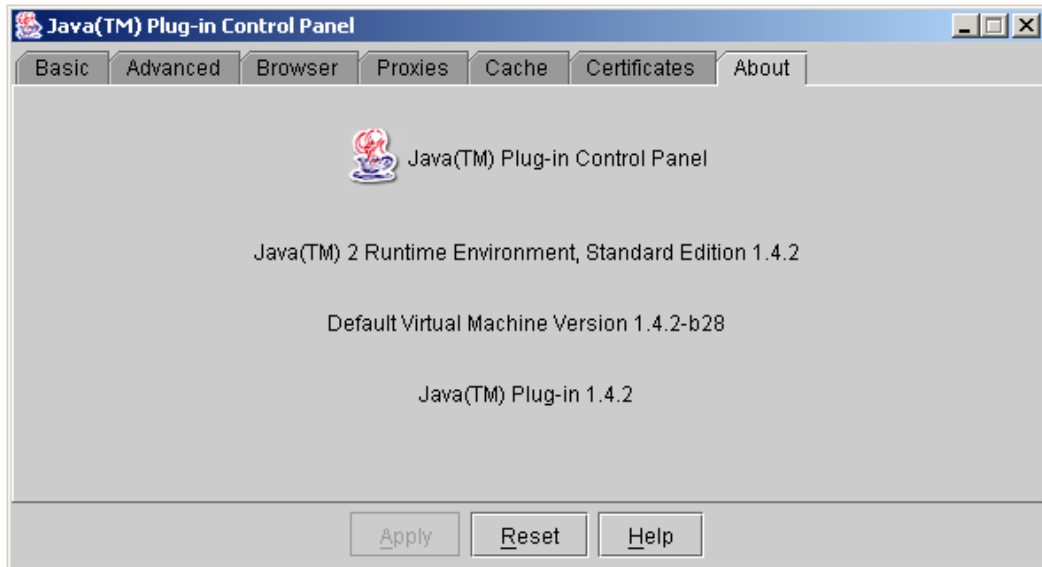


## 4 Software Installation & Overview

The remote interface of SafetyNet Plus is loaded on a standard Java enabled web browser. The Java™ Runtime Environment 1.4.2 or higher is required to view the web interface.

Read `install_notes.txt` & `Java Runtime Environment Notes.txt` for details on minimum system requirements to install Java™ Runtime Environment Version 1.4.2

Once the runtime environment is setup it is able to simply use the default web browser to load the web interface of SafetyNet Plus.



If the installation is successful, the control panel will have an icon for the "Java plug-in". Double click this to get the above plug-in window. The about tab will show you the current version of the Runtime Environment. Version 1.4.2 or higher are acceptable to view the SafetyNet Plus web interfaces.

### 4.1 Where Do I Go From Here?

Refer to the **Quick Install Guide** and then **SafetyNet Plus User Manual** for details of the units' configuration and features.