

# SafetyNet Family Range Quick Install Guide



## Abstract

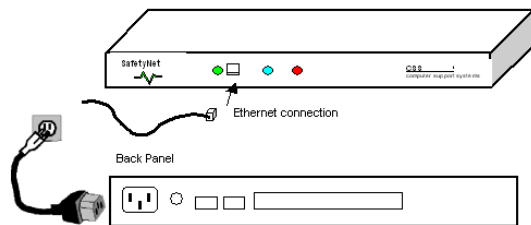
This document will guide installing any of the SafetyNet product range on the network effectively. The features of each SafetyNet product are described in the relevant reference manual.

## Requirements for a successful Installation

- o Access to the local network & UDP port 30705 available for communication.
- o Java enabled web browser. (Java™ 2 Runtime Environment, Standard Edition, Version 1.4.2. or higher)

## Hardware Installation (Details on Getting Started Manual)

1. SafetyNet should be **turned off**.
2. Connect the Ethernet cable to the interface located on the front panel.
3. Connect necessary inputs on to the back of SafetyNet.
4. Connect power cable and turn unit on.



Once the hardware installation is complete, an IP address needs to be allocated.

## Assigning an IP address

The factory default IP address of the unit is 0.0.0.0, which enables DHCP.

An IP address can be applied to the unit by:

1. DHCP server automatic IP allocation.
2. Web browser via the administration configuration page.

**Note:** *In typical installations, a static IP address is recommended. Your network administrator generally provides the IP address. Obtain the following information before starting to set up the unit: Please prevent using a duplicate IP address or a broadcast IP address.*

Serial No: \_\_\_\_\_ (Rear label on SafetyNet)

IP Address: \_\_\_\_\_

Subnet Mask: \_\_\_\_\_

Gateway: \_\_\_\_\_

### 1. IP address allocation using DHCP

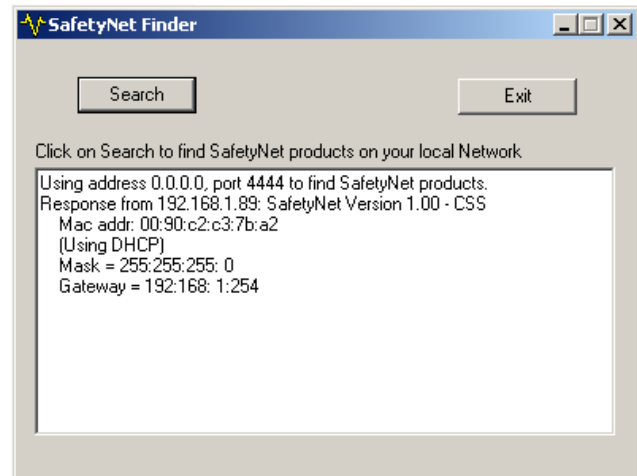
If your server is DHCP enabled, SafetyNet will be allocated with an automatic IP address, gateway address and a subnet mask when powered on.

Consult the network administrator for further details in finding the DHCP allocated IP address using the DHCP server. You may also use the tool "SafetyNetFinder.exe"<sup>1</sup> application provided by Computer Support Systems to find out the current IP address of the unit.

<sup>1</sup> SafetyNetFinder.exe is a tool provided by CSS to locate SafetyNet products on the local network

Once the IP address allocated by the DHCP server is found, use the web browser and point to the IP address to load the main menu.

**Note:** The unit falls back to the IP address 192.168.1.100 with a subnet mask of 255.255.255.0 after 15 seconds if the network is DHCP disabled. If this is the case use a cross over cable on to a PC with an IP address of 192.168.1.xxx (except 100) and set the unit to a static IP address. Once done, turn off unit, connect the unit to the local network and then turn power on.



## 2. IP address allocation using a Web Browser

Open the default web browser and direct to the IP address of the unit. Use the tool "SafetyNetFinder.exe" to find out the IP address of the unit.

Use the button links from the main menu to load the administration configuration interface. Enter the password to login and click OK. The factory default password is "password".

Make appropriate changes to the unit settings and click on the *Update Settings* button.

## 3. IP address allocation when DHCP is disabled

If your server is DHCP disabled, SafetyNet will allocate itself a fallback IP address. You are advised to use a cross over cable to set a static IP address in this case.

Method:

- A. Use a standalone PC with the IP address set to be of 192.168.1.xxx (xxx should not be 100), set the gateway to be 255.255.255.0
- B. Connect SafetyNet using a crossover cable and wait for more than 15 seconds once turned on.
- C. SafetyNet will be allocated 192.168.1.100 as its fallback IP address. Open a browser and point to the menu, where a desired static IP address can be set.
- D. Disconnect SafetyNet and connect it back on the network and ping device in order to confirm the presence.

### Important Tips

- Use the command "ping" to check if the allocated static IP address is a duplicate before you begin.
- Use the command "ping" to check if you are able to reach the unit once you have configured the unit.
- Read the trouble shooting section in the user manual for any additional tips.