



Computer Support Systems

Engineering and Manufacturing Excellence in Data Centre Infrastructure

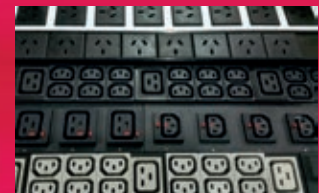


Since 1982
Australia's Largest
PDU
Manufacturer

NetSense
DCIM Software



Intelligent Power
PDU's



SafetyNet Series 5
CREMS



E-Rack
19" Rack Access Control



One Tool. One Screen. One Solution.

NetSense enterprise software creates a uniform view of each monitored site or device. The intuitive single-screen dashboard presents a birds-eye view across one or multiple sites. NetSense is a completely scalable solution with the ability to monitor unlimited virtual devices and multiple brand support. With its secure audit trail, billable reporting and custom integration potential, NetSense puts you at the helm of total system management.

IT Facility Management

The NetSense management console features geo location capability that drills down from country to city, building, floor-plan and rack-plan. Simple colour coded icons provide a device legend and active monitoring of each system device. NetSense provides real-time trending across your network, including power consumption, data flows and individual device activity. NetSense is a Windows-based, VMware compliant, multi-user, smart client system that includes active directory plus role-based user security.

Integrated security technology

NetSense enhances your site security with live system access that heralds a new remote office age. With control over security devices such as boom gates, premises entry or a single rack door, the unstaffed office becomes a possibility.

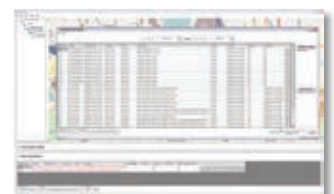
The CCTV monitoring and recording, motion activated, multi-screen video management facilitates swift remote visitor identification, admission and revoking once work is complete. Similarly, you can provide rack-door open/closure access and auditing.

A full-featured solution, NetSense supports the most complex multi-location operations yet remains ideal for single device support or emerging service providers.

Monitoring and Alarming

- Temperature
- Humidity
- Smoke
- Fluid
- Devices & racks
- Fire Systems
- UPS
- Cooling systems
- Generators
- Vesda
- Access Control
- Rack Door Controls
- CCTV (number plate recognition)
- Intelligent PDU's
- Billing / control / metering per outlet
- Amps / Voltage / KW / KWH / PF / Hz / mA
- Audit Trails and asset management
- Security System

A full-featured solution, NetSense supports the most complex multi-location operations yet remains ideal for single device support or emerging service providers.



Intelligent Power

Australia's Largest PDU Manufacturer introduces Intelligent Power®, adding one of the most extensive ranges of rack power options available today.

Delivering greater flexibility, engineering excellence and local manufacturing.

- The unique modular construction guarantees a perfect solution no matter what your needs may be.
- Intelligent Power for the latest slim line high tech PDU's on the market today
- Long lead times are a thing of the past with Intelligent Power.

Optional Sensors

Combined temperature and humidity sensor.
Dual digital dry contact alarm inputs.

Outlet types

10 amp & 15 amp Australian GPO's



(C13) & (C19) IEC outlets



(C13) & (C19) lockable IEC outlets



LEDs for indicating switched outlet status.

Standard and High Density Outlet Blocks

Modular format on all outlet types in blocks of 8 to 16 outlets per module allowing for standard & high-density configurations. With varying outlet types.

Intelligent Power PDU's come in a variety of styles from "Basic" "Metered" "Switched" "Individually Metered and Switched" and "Inline units". Allows for turning powered devices on or off, as well as power cycling devices on the server rack just by visiting a webpage and controlling the power outlet of the device connected.



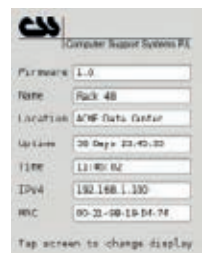
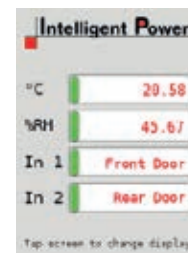
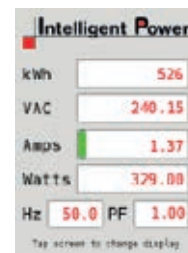
Magnetic / Hydraulic circuit breakers

Designed for worldwide data centre compatibility, provides the best in class performance in an innovative low profile, space saving package, providing the ability to reduce the overall size of the PDU, while increasing transmission capacity. Patent pending flush rocker actuator design offers additional protection against accidental switching.

Network and Serial ports providing full control and status of all PDU functions.

Local Colour Touch Screen Display

Full power information and environmental sensor status on the Intelligent Power can be viewed by the LCD screen. In the case of exceeding user set Current load or environmental thresholds Intelligent Power has the capability of notifying the incident via email or SNMP traps.



"Intelligent Power" PDU's - Unique wireless bus technology

- Horizontal & Vertical;
- Passive, Metered, Switched,
- Retrofit
- Smart Ready
- Individually Metered/Switched
- mA Metered & Built-in Super-Immune RCCB protection
- 1 to 48 outlets
- 2KW to 24KW power ranges
- SNMP enabled or obtaining all device details
- SNMP traps for alarms
- KWH, KW, Amperage, Voltage and PF monitoring
- Single phase inputs available in 10, 16, 20 and 32 amp
- Three phase inputs available in 16 and 32 amp
- Up to 24 web controlled power outlets
- PoE 1 and 2 outlet models
- Australian Made
- Australia's largest PDU manufacturer

Leads & Plug Tops

Lead length to customer requirement.
Plug Tops from 10-32amps, plain, captive, IEC and Clipsal style.



SafetyNet Series 5

Fifth Generation Environmental Monitoring System

SafetyNet Series 5 is a fifth-generation network enabled environmental monitoring system used to monitor and manage the environmental parameters of unattended or remote site installations for computer, ISP and telecommunication infrastructure.

Applications

- Computer / Server room and Server Rack monitoring
- Alarm consolidation from non-network enabled devices
- Monitoring of servers or network elements
- Water monitoring applications
- Remote door controlling applications
- Remote PoP, data centres, co-locations, telecom
- Switching facilities and utility site monitoring

Overview

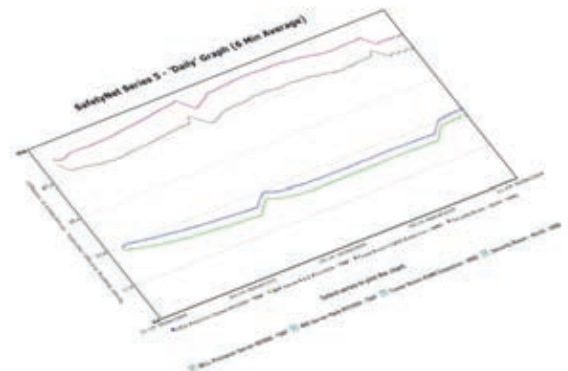
- Network enabled real time environmental monitoring
- Models from 4 to 40 inputs
- 3G modem for SMS delivery
- 19-inch rack-mountable
- Extremely user-friendly interface
- Includes email, SNMP and SMS notification
- Battery backup for monitoring during power failures
- Comprehensive status reporting
- Historical data

Comprehensive Status Reporting



Historical Data

SafetyNet Series 5 retains graphical data up to 4 selected analogue sensors. Individual graphs are available to viewing the past two hours, daily and weekly graphs.



E-Rack

- **World Leading Electronic 19" Rack Door Controls**
- **Totally Secure Rack Enclosures**
- **Know who is entering any rack at time**

Proxy Card - Keyed - or Operator Controlled

The E-Rack Door locking solution is ideal for Data Centres offering maximum security. The POE (Power-over-Ethernet) driven solution can be managed from your NOC (Network Operations Centre). Our World Class solution allows complete access control to your Racks.

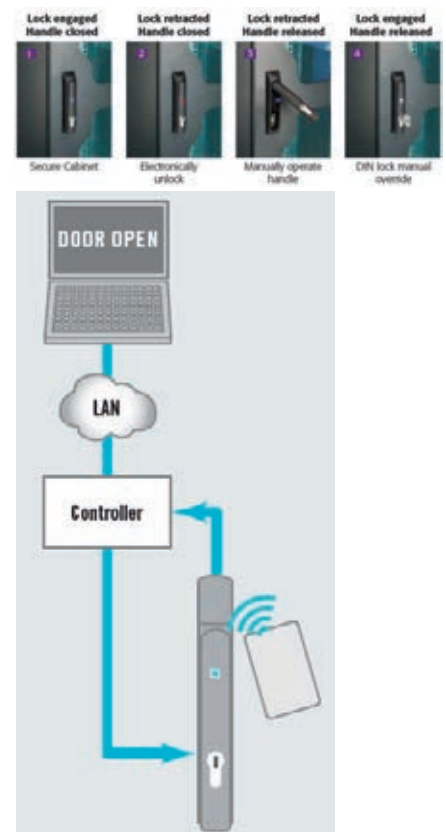
Fast, effective and easy installation ensures total protection of all rack content ensuring no unauthorised access and logs of all events by operations.

Remotely monitored and controlled over the network using standard web browser.

Integrate with NetSense Management Software for a total solution.

- Simple graphic representation with drag-and-drop device legend for current equipment status;
- A system that is easy to install and use
- Cost efficient integration and fault tolerance
- Easy to retrofit into existing enclosures
- Flexibility to meet changing data center needs
- Leverage existing investments
- Integration with related NetSense or other internal systems
- Single source for access permissions
- SNMP and email notification
- Comprehensive event files

The notification mechanism involves recording the event in the devices internal logs as well as optionally transmitting alerts over the network using email and SNMPv2 notifications.



Luxriot Evo modules and features

Luxriot Evo's key integral elements work together to create a cohesive and up-to-date piece of VMS software. When it comes to surveillance, every detail is important, so everything will be taken care of.



Machine Learning Video Analysis Suite

Luxriot Evo offers fully integrated add-on modules for automatic video stream analysis such as Face Recognition, Vehicle License Plate Recognition and Video Content Analysis.



Livestock Australia Strongabuilt Crown Casino
Australian Securities Zurich Insurance ITLX Pty Ltd
Ord Minet Hirotec Maintenance KPMG Ericsson Australia
Inghams Infostream NextDC City West Water Seadan Security Bank of America
AWB Limited Yarra Valley Water Schiavello Australian Leisure Hotels HPT Consulting
Patties Foods Fauldings Healthcare Vision Superannuation AUSTRAC Over 50's Fr
IAMB Systems Melbourne University Fraser Server Room Specialists TAC Pacific
Revenue Office Air Services Australia Marrickville City Council Futuris Autom
Sunrise Health Systems Victoria Insurance Australia Group Heritage Building Soc
Leakin University Malleson Stephen Jacques Gippsland Water Medical Practitioners Bo
ment of Industry Micron21 Telstra Broadcast Services Radiation Oncology Ja
ational Library of Australia Commonwealth Director of Public Prosecutions Devonport
ive Services NSW Toll Holdings TPG Rio Tinto Pipe Networks Department
ee Department of Housing New South Wales Nephew Marine and Freshwater Insti
th Wales YourDC AAPT Rexel (Page Data) Department of Infrastructure Vic
th Pacific Pty Ltd Fosters Group Fish Marketing Authority NSW AVIVA Australia Pty
erals Department Australian Air Services University of Sydney Ernst Young Blues
Alliance Electric Townsville City Council Bendigo Community Telco PK Business Ar
es Group Victrack BAE Systems Toyota Technical Centre Nortel IBM Group Se
on Holdings SPI Networks Pty Ltd Tourism Heritage South Australia Star Track E
Project Shop CSIRO IAS Sports Betting McK Services Pty Ltd Victoria Legal Aid Co
ultz Australia Deacons Lawyers GEMCO Exploration AON Risk Services
y Smiths Snackfoods Nuplex Industries Pacific Communications Hoshizaki Land
Smith AMES Sara Lee Household Investment Commission Caltex Austr
Logica CMG AAPT



Computer Support Systems

373 Johnston Street Abbotsford VIC 3067
T +61 3 9419 3955
E info@csspl.com.au
www.csspl.com.au

Distributor: