



# SafetyNet Series 5

## FIFTH GENERATION ENVIRONMENTAL MONITORING SYSTEM RANGE

www.csspl.com.au



SafetyNet Series 5 is a fifth-generation network enabled environmental monitoring system range from Computer Support Systems which is used to monitor and manage the environmental parameters of unattended or remote site installations for computer, ISP and telecommunication infrastructure.

### REAL TIME MONITORING AND NOTIFICATION

SafetyNet Series 5 monitors the environmental aspects using sensors connected to the device via RJ45 CAT5 cables. Alarm conditions are captured and notification is delivered via SMS messages, emails and in SNMP trap form, allowing the network monitoring team to respond to the alarms as necessary. A network interface of an IT infrastructure (IP address) and failure of mains power also can be monitored and notified.

The relays on SafetyNet Series 5 can be configured to drive external peripherals either via alarm activation/deactivation or manually via a comprehensive interface.

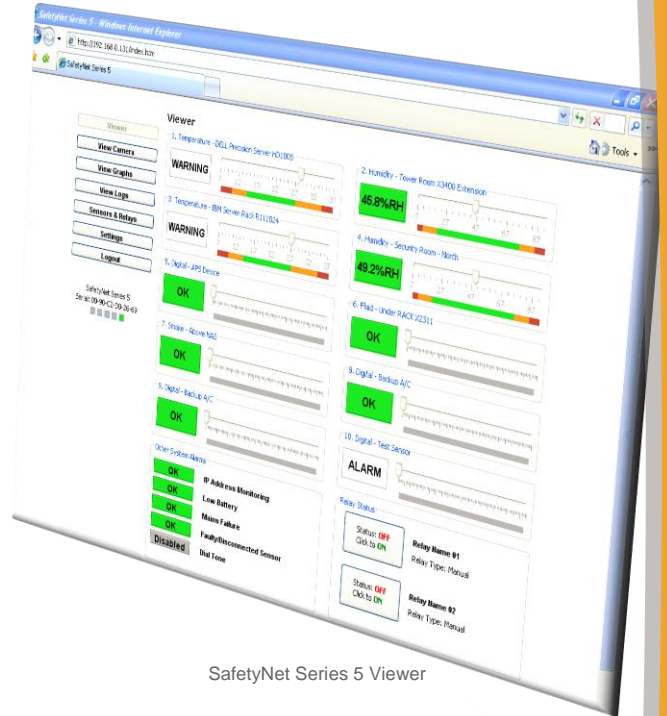
### APPLICATIONS

- ❑ Computer server room, server rack monitoring and management
- ❑ Alarm consolidation from other non-network enabled devices
- ❑ Monitoring of servers or network elements
- ❑ Water monitoring applications
- ❑ Remote door controlling applications
- ❑ Remote PoP, data centres, co-locations, telecom switching facilities and utility site monitoring

### OVERVIEW

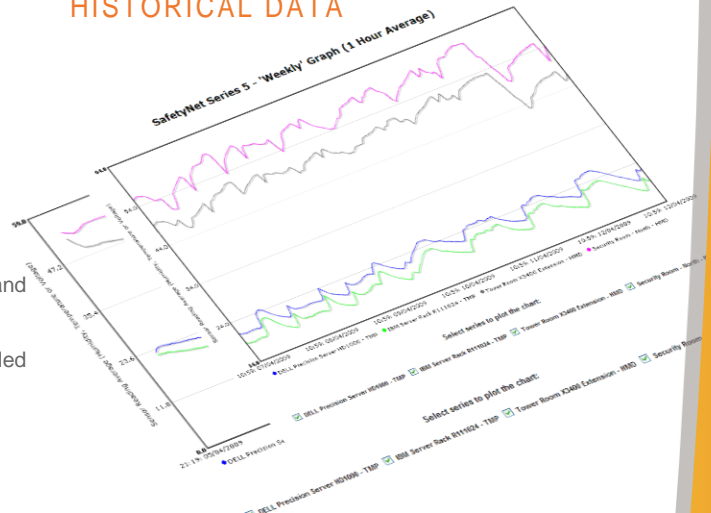
- ❑ Network enabled environmental monitoring
- ❑ Up to ten universal inputs, up to two 12V relay controls or 40 digital inputs or a combination
- ❑ 3G modem for SMS delivery
- ❑ 19-inch rack-mountable
- ❑ Extremely user-friendly interface
- ❑ Includes email, SNMP and SMS support
- ❑ Battery backup for monitoring during power failures

### COMPREHENSIVE STATUS REPORTING



SafetyNet Series 5 Viewer

### HISTORICAL DATA



SafetyNet Series 5 Graphs

SafetyNet Series 5 retains graphical data up to 4 selected analogue sensors. Individual graphs are available to viewing the past two hours, daily and weekly graphs. Graphs allow planning of suitable equipment to maintain necessary standards in the monitored environment.

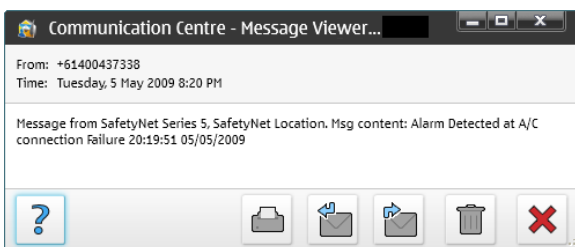


## EASY TO DEPLOY AND USE

SafetyNet Series 5 can be docked in on the server rack or on top of a shelf with sensor cables (CAT 5 RJ45 type) running to the back of the unit. A network connection is made on the front of the device.

The GSM modem requires the user to enter a SIM card for SMS messaging service. The PSTN modem based SafetyNet Series 5 devices require subscription to a service provider for delivering SMS messages.

## SMS Messages



## PRODUCT RANGE

### SafetyNet Series 5:

- 10 universal inputs, two 12V relays with optional 3G modem

### SafetyNet Series 5 Lite:

- 6 universal inputs, one 12V relay with optional 3G modem

### SafetyNet Series 5 Micro:

- 4 universal inputs, with optional 3G modem

### SafetyNet Series 5 D20:

- 20 digital inputs, one 12V relay control with optional 3G modem

### SafetyNet Series 5 D40:

- 40 digital inputs, two 12V relay controls with optional 3G modem

### SafetyNet Series 5 Combo:

- 6 universal inputs, 20 digital inputs, two 12V relay controls with 3G modem

## ORDERING

ZSN5001 - SafetyNet Series 5 Micro  
 ZSN5002 - SafetyNet Series 5 Lite  
 ZSN5003 - SafetyNet Series 5  
 ZSN5004 - SafetyNet Series 5 D20  
 ZSN5005 - SafetyNet Series 5 D40  
 ZSN5006 - SafetyNet Series 5 Combo

Email: [sales@csspl.com.au](mailto:sales@csspl.com.au)

## FEATURES

### DIMENSIONS & OPERATIONAL

- 480 mm L X 45 mm H (1 RU) X 107 mm W
- Complies to IP 42
- Operation Conditions: -5°C to 55°C and 5%RH to 90%RH

### NETWORK INTERFACE

- 10Base-T, RJ45 Ethernet
- Full Duplex, Ethernet: Version 2.0/IEEE 802.3

### INPUTS & OUTPUTS

- Up to 10 RJ45 type universal inputs. Input types include temperature, humidity, voltage, smoke, fire or digital (contact closure)
- SIM card slot for modem communication
- Outputs include up to 2 relays driven at 12V. Separate output connections to activate a buzzer and/or strobe

### PROTOCOLS & USER INTERFACE

- GSM, GPRS & TAP for modem communication
- SNMP, SMTP, ICMP, NTP, ARP, DHCP, BOOTP and HTTP
- User interface based on Java hosted on internal web server

### 3G MODEM

- Cellular Radio Global operation (quad GSM band: 850/900/1800/1900 MHz)
- Sierra Wireless AirPrime® HL8548 form factor modem

### TEMPERATURE & HUMIDITY SENSOR

- Humidity Accuracy  $\pm 3.5\%$  RH,
- Temperature Accuracy  $\pm 0.5$  @ 25°C
- Range -20°C to 100°C and 0 to 100%
- Power consumption 28 $\mu$ A

### POWER SUPPLY

- Operating voltage: 15VDC
- Input via plug pack: 90 – 264 VAC, 47-63Hz
- Internally battery backed up to 6 hours of operation

## Computer Support Systems

373 Johnston Street  
 Abbotsford  
 VIC 3067  
 Australia  
 Telephone: +613-9419 3955  
 Fax: +613-9419 3905

[www.csspl.com.au](http://www.csspl.com.au)

